

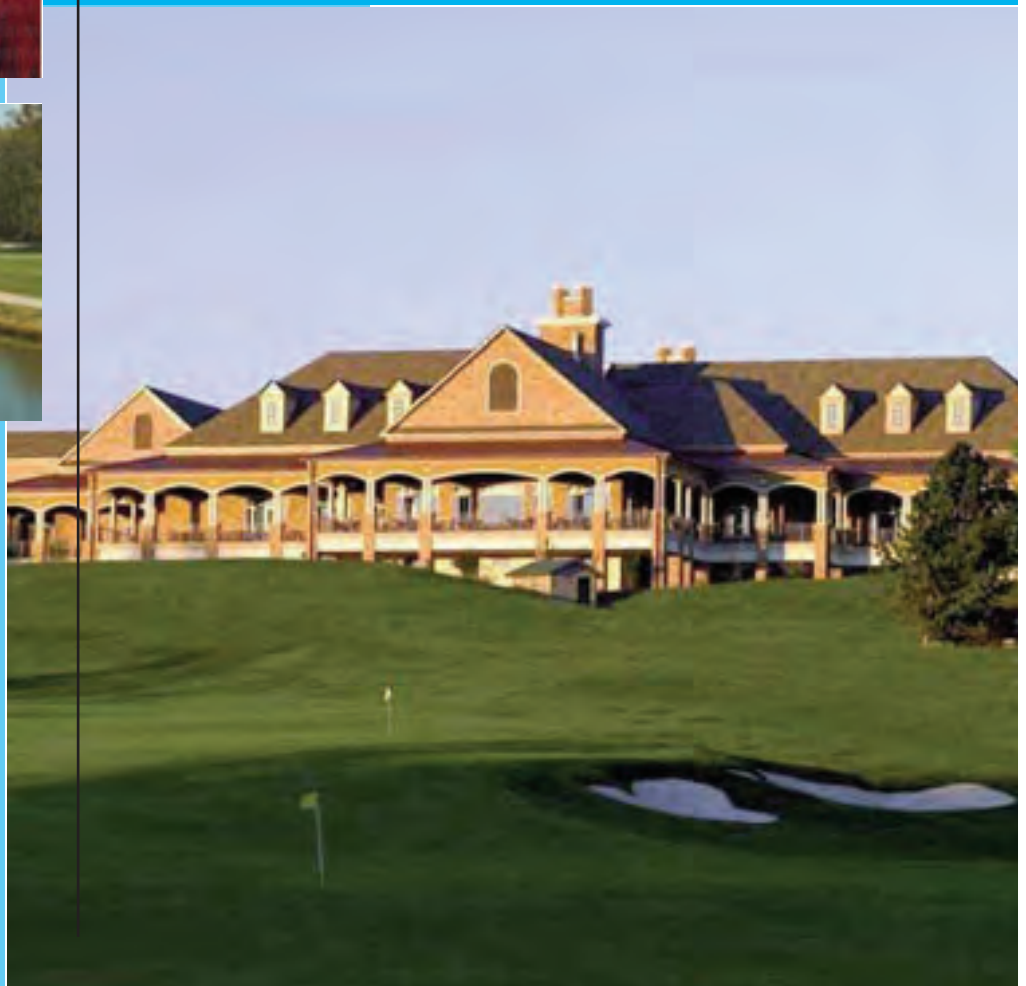
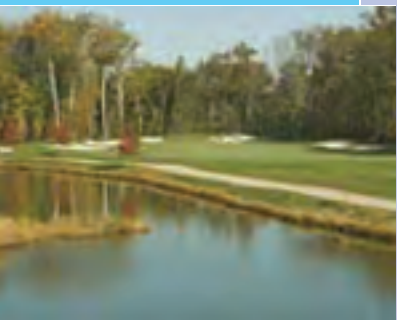
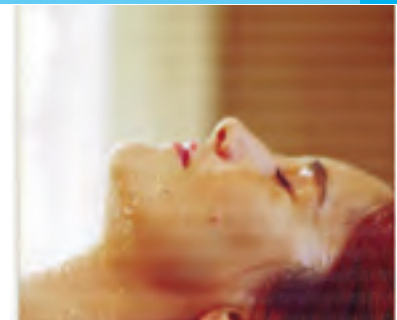
PMA Spring Break 2007

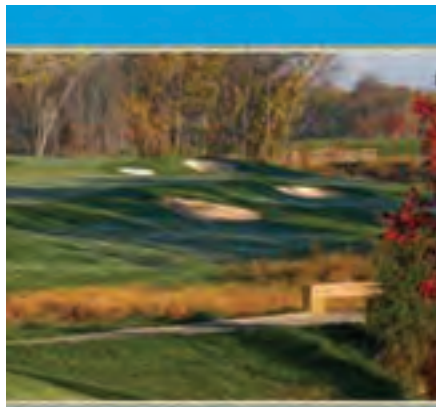
Monday, May 14, 2007

Lansdowne Resort

44050 Woodbridge Parkway

Lansdowne, VA 20176





PMA Spring Break 2007

2007 marks a new beginning for PMA's Spring Break. The industry's best golf and volleyball outing heads to the fabulous Lansdowne Resort in Leesburg. Committee Co-Chairs Josh Bortnick (Big Stuff, Inc.) and David Hollingsworth (ARC Water Treatment) are hard at work, organizing, strategizing and brainstorming to make the region's best attended and most dynamic industry outing exceed expectations

Golf

Spring Break takes over 36 holes of the best golf that our region has to offer. Members and guests will play either the Norman Course (voted one of the top 10 new courses in America in 2005 by Golf Magazine) or the RTJ Course. The format is a scramble. Each foursome hits a tee shot and then plays the remainder of the hole from the spot of the best ball. Fee includes greens fees, cart, practice range, contests, continental breakfast, lunch, reception, open bar, gift and door prizes.

Volleyball

Who's the best? Settle the score on the volleyball court by putting together a team of six players (at least two must be female). Awards are presented to the winning team and the runner-up. The fee includes continental breakfast lunch, volleyball, reception and prizes.

Reserve a Spa Foursome

PMA members will have the opportunity to pamper themselves by spending a half-day at Lansdowne's fabulous Spa Minerale. Spa Chair Debra Smith has arranged an afternoon of pure pleasure whereby spa goers can enjoy a choice of massage, skin care, body treatments, manicures, pedicures and a wide range of other spa opportunities.

The Schedule

8:30-10:30am	Golf registration, practice range
9:30am	Volleyball registration
10am-4pm	Volleyball tournament
10:30am	Golf Shot Gun Start
11:30am-1:30pm	Lunch at the Turn
Noon:	Spa Lunch
1:00pm-4:00pm	Spa Activities
4:00pm-6:00pm	Reception, Awards, Prizes

Sponsorship Opportunities and Fees

The Majors: (\$2,500/8 available)

One foursome (\$1,800 value), tee or green sign, corporate signage, BULLETIN recognition through June, ticket stub sponsor, and beverage cart sponsor.

Tour Sponsors (\$2,200/8 available)

One foursome (\$1,800 value), tee or green sign, BULLETIN recognition through June, and sign recognition.

Foursomes/Commissioner Sponsors(\$1,800/46 available)

One foursome (\$1,800 value), tee or green sign.

Spa Foursomes (\$1,800/\$450 per person)

Spa Foursomes include a spa lunch, massage and two different spa treatments

Volleyball (\$1,800/1 available)

One volleyball team (6 players, value \$1,500), corporate signage, BULLETIN recognition through June and sign recognition at the event.

Bar Sponsorship (\$1,700/3 available)

Sponsorship of one of the three open bars during the 19th hole reception and two tickets to attend the reception.

Beat the Amateur (\$1,000/2 available)

Network with every golfer on the course by challenging them to “beat the amateur” on a par three. Sponsors can have a designate rep hit one shot with every foursome. Anyone on the green inside of the amateur wins a sleeve of golf balls.

Reception Only (\$150/person)

If you can't make it earlier in the day, join us at the 19th hole for a fabulous open-bar reception.

Event Sponsorships (\$500)

Longest Drive (2)
Valet Bag Drop (1)
Flags on the Green (1)
Volleyball Coolers (2)
Driving Range (2)
Chipping Contests (2)
Photography (1)
Closest to the Pin (8)
Putting Contests (2)
Rest Rooms (1)
Lunch Tables (2)

Tee or Green Sponsor (\$250)



PMA Spring Break 2007 Reservation Form

Monday, May 14, 2007

Lansdowne Resort, Lansdowne, VA



Reservation coordinator: _____

Company: _____

Phone: _____ E-mail: _____

Golfers

1. _____
2. _____
3. _____
4. _____

Volleyball (\$300 per person)

1. _____
2. _____
3. _____
4. _____
5. _____
6. _____

Spa (\$450 per person)

1. _____
2. _____
3. _____
4. _____

Reception only \$150 per person

1. _____
2. _____
3. _____
4. _____

Sponsorships

- _____ \$2,500 Major
- _____ \$2,200 Tour
- _____ \$1,800 Commissioner
- _____ \$1,700 Bar
- _____ \$1,000 Beat the Amateur
- _____ \$1,800 Volleyball

Events (\$500)

- _____ Longest Drive
- _____ Valet Bag Drop
- _____ Chipping Contest
- _____ Flags on Green
- _____ Lunch Tables
- _____ Driving Range
- _____ Putting Contest
- _____ Rest Rooms
- _____ Photography
- _____ Closest to the Pin
- _____ Volleyball Coolers
- _____ Tee or Green (\$250)

Enclosed is our check in the amount of \$_____ covering payment in full.

We would like to pay by credit card (VISA, MC , AmEx):

Card Number: _____

Expiration Date: _____ Security Code: _____

Name of Cardholder: _____

Return with payment in full to PMA, 7900 Wisconsin Avenue, Suite 305, Bethesda, MD 20814. Fax: 301-907-9326. For more information or if you have questions, call PMA at 301-657-9200.